



EMPOWERING SOLUTIONS



Schmidbauer



CONSTANTLY DIFFERENT, TANGIBLY MORE.

For more than 90 years, Schmidbauer stands for the safe handling of heavy loads. These decades of experience paired with state-of-the-art technology and human expertise are our hallmark. We view social and ecological responsibility along the entire value chain as a matter of course. By balancing people, technology, and the environment, we empower solutions.

Our recipe for success: We find a custom solution for every challenge our customers face – none is too complex. Our efficient processes and extensive network allow us to pinpoint our performance in the most dynamic of environments and international markets.

When it comes to lifting and moving heavy loads, only the best performance will do. That is why quality and safety are our top priority – both for the project and for the people involved. With sophisticated engineering, the extensive experience of our experts, and latest technology, we get every job done precisely.

As a traditional family-owned company with strong values, we take a collaborative approach, both within the company and with our customers and partners. As an innovation leader, we pair technical expertise with versatile soft skills. This is how we create a reliable foundation for good cooperation and successful projects.

MOBILE CRANES FOR EVERY JOB.

When it comes to mobile cranes, we have what it takes for projects of any scale. We offer the perfect machine in top quality for any task. Because precise lifting relies on the right technology – in just the right size and reliable all around.

Our extensive crane fleet covers the entire range: From mini cranes with a lifting capacity of 5 tons to powerful crawler cranes that can move up to 1,350 tons. We also have mobile construction cranes, truck-mounted loading cranes, and all-terrain cranes with a lifting capacity of 40 to 700 tons.

Equally valuable to Schmidbauer's extensive and state-of-the-art mobile crane fleet is our profound experience in handling the most demanding technology. This is where our highly trained experts come in. They have what it takes to execute every project – precisely, reliably, safely, and efficiently.





HEAVY LIFTING DONE SMARTLY.

The more complex the project, the more important it is to have the right partner at your side. As a global specialist for lifting heavy loads, we support our customers throughout every project phase. With dedicated detailed planning, we help our customers weigh their options and find efficient approaches. In the development phase, our engineering team works up creative solutions. And with decades of experience, our knowledgeable teams are the perfect collaborators throughout the entire project.

Hardly a day goes by when we don't see people excited about the fascinating strength of our fleet. But we recognize that the key to the successful use of even the most advanced technology is the know-how of skilled experts and adherence to all necessary safety requirements. Then there is our perfectly networked logistics. At once flexible and precisely planned and calculated, we rely on local and international logistics stakeholders to take every project to the final goal.

Whether in the petrochemical industry, bridge construction, or the infrastructure sector – Schmidbauer is active in a wide range of industries. With our attitude of corporate responsibility, we are taking part in driving the transformation of the industry and the economy. We see ourselves as a partner of the energy transition. As such, our commitment to on- and offshore wind energy helps promote overarching global energy strategies.



HEAVY LOADS ON THE GO.

Excess lengths, widths, and weights – heavy over-land haulage is a particularly challenging job. In addition to specialized technology, it is one that requires experienced teams that work well together, precise planning and preparation, not to mention a variety of interdependent skills.

When it comes to heavy haulage, we are perfectly equipped for all your needs. We bring commodities of any size to their destination – safely, efficiently, and on time. And we offer complete project management from a single source: from route planning and inspection to obtaining the necessary permits.

In addition to the actual transport itself, we have our customers' backs with custom extras, such as renting video-monitored storage space, and making freight arrangements with reliable forwarding partners.

Our service portfolio::

- ▶ Specialized fleet with 3- and 4-axle trucks
- ▶ Flatbeds equipped with a patented support system specially designed for transporting transformers
- ▶ Our own escort vehicles (BF3 and BF4)
- ▶ Self-propelled modular transporters (SPMTs)





A STRONG PARTNER FOR INDUSTRIAL INSTALLATIONS.

The Schmidbauer team of transport and logistics experts handles challenging installation projects, even under the most difficult of conditions.

Our industrial installation services range from the professional dismantling, reassembly, and assembly of machines and other technical equipment to relocating entire plants and factories. We handle the design, planning, and seamless execution of complex installation requirements.





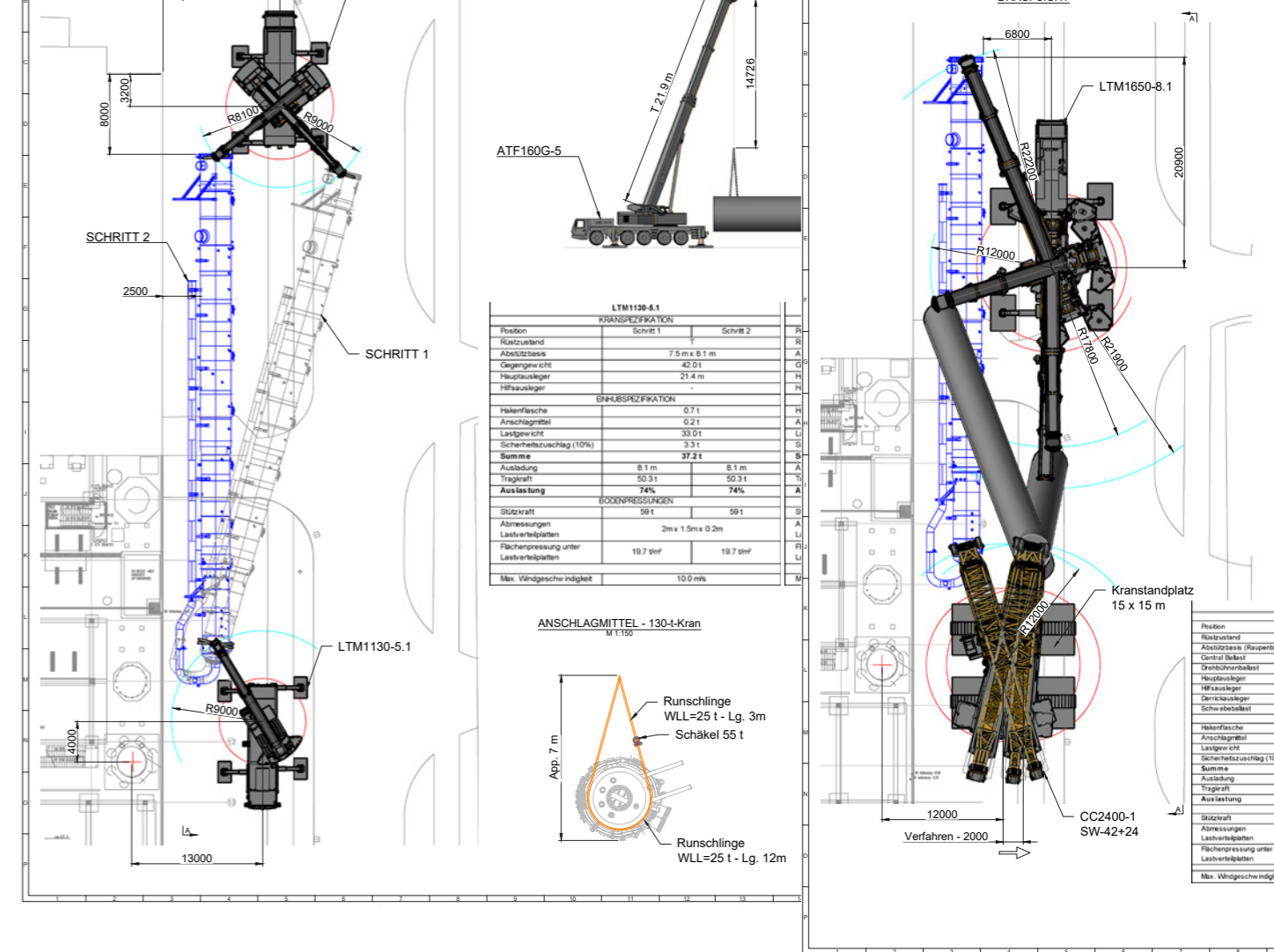
ADDED VALUE THROUGH OUR PERFORMANCE PLUS.

We are not only pioneers in custom lifting and moving. We are also a partner that understands our customers' needs. That is why we offer a range of additional services and extras in addition to our core portfolio. The seamless interplay of technology and engineering – that is our above-and-beyond service.

Before we even begin an assignment, we make sure that everything is structured and predictable, covering all relevant aspects of the project: consulting, project management, on-site operations management, provision of specialized equipment, safety training for signallers and slingers, and logistics and warehousing.

The knowledge and skill of our employees constantly frees up new potentials. They act as a think tank for solutions and a generator of profitability. This results in added value that gives our customers more leeway and a clear edge – nationally and internationally.

Above-and-beyond service for above-and-beyond results: A 360-degree concept that pools resources and reduces our customers' workload.



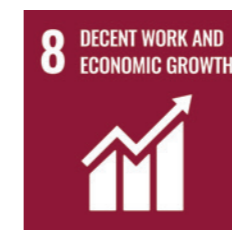


REACHING GOALS. CHANGING THE FUTURE.

As a family-owned business, sustainability is one of our core concerns: We want to hand our business and the planet itself down to the next generation in the best possible condition. Living up to our responsibility for people, society, and the environment means we strive for continuous improvement in all areas of our business.

Our actions are guided by both legal requirements and ethical standards to which we have committed ourselves. We respect universal human rights and align our conduct with the United Nations' 2030 Agenda for Sustainable Development (Sustainable Development Goals or SDGs).

Our sustainability efforts focus on areas of transformation related to five of the 2030 Agenda goals that are particularly relevant to our day-to-day business.



Reaching these goals is an ongoing process. What counts is that we are aware of our responsibility and are actively working toward them. In this way, we and our partners and customers are driving the transformation in the right direction.



A PLATFORM FOR MORE KNOWLEDGE AND SKILL.

Our position as a global heavy haulage specialist is reflected in the combined experience, know-how, and skill of all our employees. To this end, the Schmidbauer Academy is a place for systematic training and development, and the comprehensive transfer of knowledge.

As an overarching training facility, the Schmidbauer Academy offers our employees a variety of training courses to develop their professional skills and abilities. And for our customers and partners, it serves as an inspiring platform for dialogue and knowledge transfer, an institution of theory and practice.

Through methodical internal training, we have created standardized working methods and benchmarks that ensure our quality of standard aligns with the legal requirements.

Schmidbauer has been setting safety standards in the industry for decades. All our courses, online training programs, and practical training offerings prioritize the personal safety of everyone involved.



HIGHEST STANDARDS IN SAFETY, QUALITY, AND ENERGY EFFICIENCY.



Our certificates::

- ▶ Occupational safety SCC**
- ▶ Quality management ISO 9001:2015
- ▶ Energy management ISO 50001:2018

Acting with responsibility is a matter of attitude: We hold ourselves to the highest standards in everything we do. Furthermore, our performances is independently certified.

When it comes to occupational safety, we consistently and systematically protect the health of all project participants. Our SCC** VAZ 2021 certification reflects our full compliance with the relevant guidelines.

Quality is an important aspect of who we are. As such, our ISO 9001:2015-certified quality management system is a top priority throughout the company. The result: Our quality mindset is deeply rooted in all business areas and for every employee.

Methodic energy management allows us to fully exploit savings potentials. Our ISO 50001:2018 certificate is proof of our good energy performance – good for both the environment and your budget.

In 2022, Schmidbauer underwent a comprehensive and demanding sustainability audit by the internationally recognized and competent sustainability rating agency EcoVadis for the first time – and met with success. In 2024 the company placed in the top third of all companies audited by EcoVadis. The assessment was based on indicators for responsible and sustainable business practices, the implementation of specific measures, and current key performance indicators (KPIs).



THERE FOR YOU WHEREVER YOU ARE.

Our team of approximately 600 employees offers you maximum flexibility, ensuring that you always have a personal contact close by – at around 30 locations throughout Europe.

Munich headquarters

Schmidbauer GmbH & Co. KG
Seeholzenstraße 1
82166 Gräfelfing/Munich
T +49 89 898676-0
info@schmidbauer-gruppe.de

Hanover

Fricke-Schmidbauer Schwerlast GmbH
Rehagen 10
30165 Hanover
T +49 511 3523637
hanover@fricke-schmidbauer.com

Neustadt a. d. Donau

Schmidbauer GmbH & Co. KG
Raffineriestraße 100
93333 Neustadt a. d. Donau
T +49 9445 9910236
regensburg@schmidbauer-gruppe.de

Unterschleißheim/Munich

Schmidbauer GmbH & Co. KG
Daimlerstraße 1
85716 Unterschleißheim
T +49 89 3706425-0
muenchen-nord@schmidbauer-gruppe.de

Aschersleben

Fricke-Schmidbauer Schwerlast GmbH
Subsidiary
06449 Aschersleben
T +49 3476 800190
aschersleben@fricke-schmidbauer.com

Ingolstadt

Schmidbauer GmbH & Co. KG
Isaac-Newton-Straße 3
85055 Ingolstadt
T +49 841 90139-0
ingolstadt@schmidbauer-gruppe.de

Nuremberg

Schmidbauer GmbH & Co. KG
Raudtner Straße 3
90475 Nuremberg
T +49 911 998529-3
nuernberg@schmidbauer-gruppe.de

INTERNATIONAL

Augsburg

Schmidbauer GmbH & Co. KG
Eisackstraße 5
86165 Augsburg
T +49 821 4483199-0
augsburg@schmidbauer-gruppe.de

Karlsruhe

Schmidbauer GmbH & Co. KG
Wikingerstraße 5
76189 Karlsruhe
T +49 721 82446-0
karlsruhe@schmidbauer-gruppe.de

Oberndorf

Schmidbauer GmbH & Co. KG
Im Rankäcker 1
78727 Oberndorf
T +49 7423 92009-0
oberndorf@schmidbauer-gruppe.de

Estonia

Schmidbauer OÜ
Veskimäe 1
10618 Tallinn
T +372 5112493
info@schmidbauer-group.com

Bindlach/Bayreuth

Schmidbauer GmbH & Co. KG
Lehengraben 24
95463 Bindlach/Bayreuth
T +49 9208 9966
bindlach@schmidbauer-gruppe.de

Kempten

Schmidbauer GmbH & Co. KG
Bleicherstraße 24
87437 Kempten
T +49 831 28115
memmingen@schmidbauer-gruppe.de

Pfedelbach/Heilbronn

Schmidbauer GmbH & Co. KG
Kelterstraße 3
74629 Pfedelbach
T +49 7941 69784-0
pfedelbach-montage@schmidbauer-gruppe.de

Finland

Schmidbauer GmbH & Co. KG
Ahti Business Park, Ahventie 4
02170 Espoo/Helsinki
T +49 171 7217228
info@schmidbauer-group.com

Braunschweig

Fricke-Schmidbauer Schwerlast GmbH
Aussigstraße 7
38114 Braunschweig
T +49 531 500071
info@fricke-schmidbauer.com

Kiefersfelden/Rosenheim

Schmidbauer GmbH & Co. KG
Zementwerkstraße 1
83088 Kiefersfelden
T +49 8033 3025 66-0
kiefersfelden@schmidbauer-gruppe.de

Regensburg (mobile cranes)

Schmidbauer GmbH & Co. KG
Bukarester Straße 3
93055 Regensburg
T +49 941 79989-0
regensburg@schmidbauer-gruppe.de

France

Schmidbauer GmbH & Co. KG
4, Avenue de Wissembourg
67500 Hagenu
info@schmidbauer-group.com

Burghausen

Schmidbauer GmbH & Co. KG
Klausenstraße 38
84489 Burghausen
T +49 8677 76842-0
burghausen@schmidbauer-gruppe.de

Landsberg am Lech

Schmidbauer GmbH & Co. KG
Max-von-Eyth-Straße 6
86899 Landsberg a. Lech
T +49 8191 941774
landsberg@schmidbauer-gruppe.de

Regensburg (special transports)

Schmidbauer GmbH & Co. KG
Bukarester Straße 5
93055 Regensburg
T +49 941 79989-13
regensburg-st@schmidbauer-gruppe.de

Poland

Schmidbauer GmbH & Co. KG
ul. Wroclawska 95/6
81-530 Gdynia
M +48 792 253247
info@schmidbauer-group.com

Deggendorf

Schmidbauer GmbH & Co. KG
Betriebsstraße 32
94469 Deggendorf
T +49 991 7389
deggendorf@schmidbauer-gruppe.de

Loiching/Dingolfing

Schmidbauer GmbH & Co. KG
Isarstraße 4
84180 Loiching
T +49 8731 750895-0
dingolfing@schmidbauer-gruppe.de

Sasbach

Schmidbauer GmbH & Co. KG
Gewerbestraße 4
79361 Sasbach
T +49 7642 9201807
sasbach@schmidbauer-gruppe.de

Friedrichshafen

Schmidbauer GmbH & Co. KG
Siemensstraße 8
88048 Friedrichshafen
T +49 7541 59941-24
friedrichshafen@schmidbauer-gruppe.de

Memmingen

Schmidbauer GmbH & Co. KG
Zeissweg 8
87700 Memmingen
T +49 8331 3444
memmingen@schmidbauer-gruppe.de

Stockach

Schmidbauer GmbH & Co. KG
Höllstraße 12
78333 Stockach
T +49 7771 5151
stockach@schmidbauer-gruppe.de

Hamburg

Fricke-Schmidbauer Schwerlast GmbH
Fährstieg 9
21107 Hamburg
T +49 40 60771068-0
hamburg@fricke-schmidbauer.com

Münchsmünster (Basell)

Schmidbauer GmbH & Co. KG
Berghäuser Weg 50
85126 Münchsmünster
T +49 8402 9395607
ingolstadt@schmidbauer-gruppe.de

Ulm

Rieger & Moser GmbH & Co. KG
Hans-Lorenser-Straße 26
89079 Ulm
T +49 731 44006
info@rieger-moser.de



Schmidbauer



Schmidbauer GmbH & Co. KG

Munich headquarters

Seeholzenstraße 1 | 82166 Gräfelfing | Germany

T +49 89 898676-0 | F +49 89 851124

info@schmidbauer-group.com

www.schmidbauer-group.com

