



30,5/42m



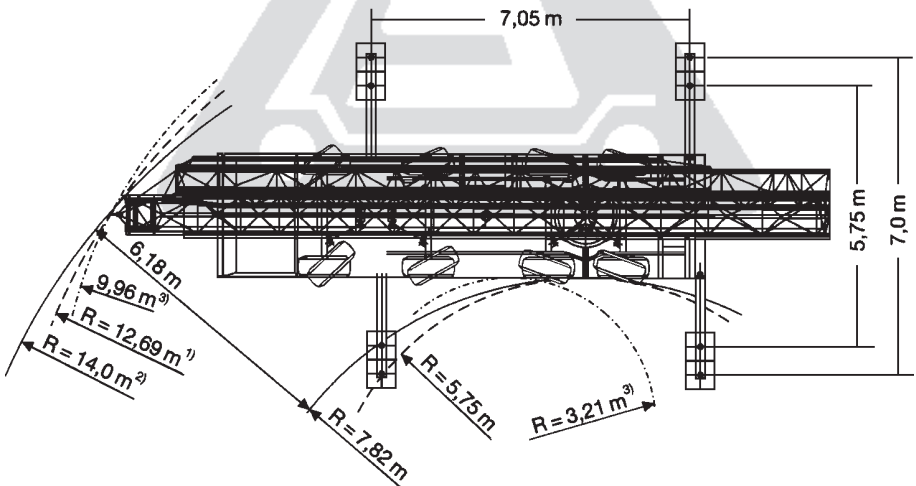
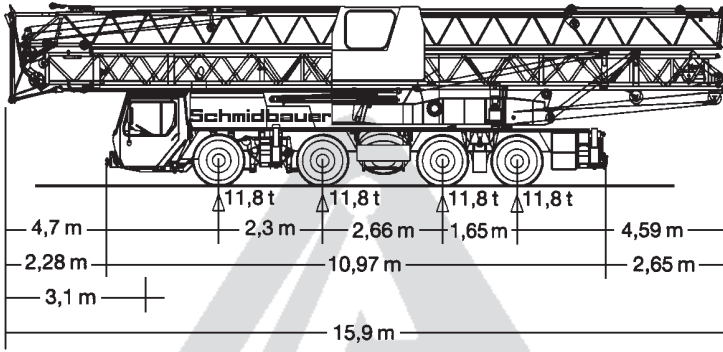
7x7,05m



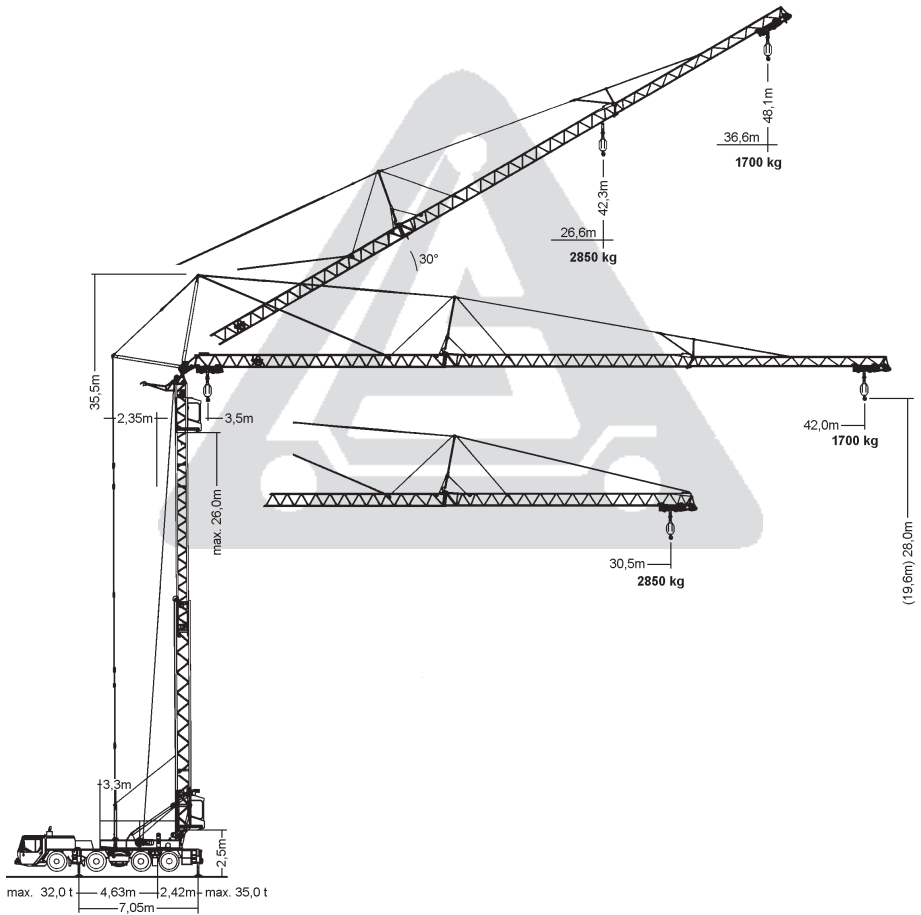
fest



35t



- 1) Volleinschlag Vorderachslenkung
- 2) Kreisfahrt lt. StvZO
- 3) Volleinschlag 4-Achslenkung







30,5/42m

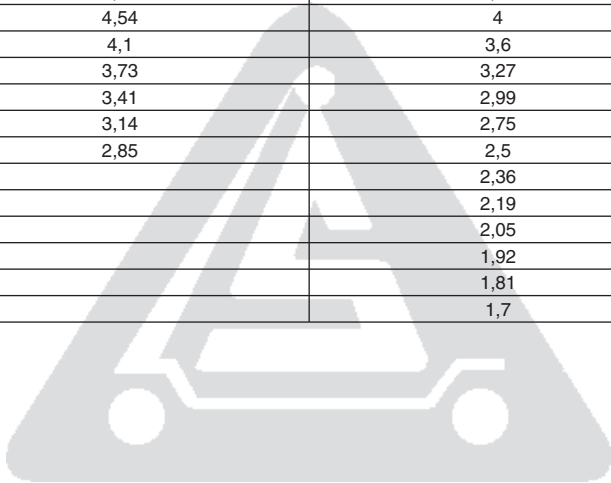
7x7,05m

fest

360°

75%

	30,5 0°	42 0°	
6	8	8	6
8	8	8	8
10	8	8	10
12	7,77	6,87	12
14	6,62	5,85	14
16	5,76	5,08	16
18	5,08	4,48	18
20	4,54	4	20
22	4,1	3,6	22
24	3,73	3,27	24
26	3,41	2,99	26
28	3,14	2,75	28
30,5	2,85	2,5	30,5
32		2,36	32
34		2,19	34
36		2,05	36
38		1,92	38
40		1,81	40
42		1,7	42





30,5/42m



7x7,05m





fest



360°



75%

	30,5 30°	42 30°	
6	6	6	6
8	6	6	8
10	6	5,2	10
12	6	4,58	12
14	5,26	4,08	14
16	4,66	3,68	16
18	4,18	3,34	18
20	3,79	3,05	20
22	3,45	2,8	22
24	3,17	2,59	24
26,6	2,85	2,34	26,6
28		2,24	28
30		2,09	30
32		1,96	32
34		1,84	34
36,6		1,7	36,6

