



**YOUR HEAVY LIFT PARTNER
FOR THE ENERGY TRANSITION**



Schmidbauer

▶ **FLOATING OFFSHORE WIND FARM**

PROVENCE GRAND LARGE, FRANCE

Schmidbauer was commissioned to support engineering and heavy lifting for France's first floating wind farm off the Mediterranean coast near Marseille.

A concept was developed by Schmidbauer for the erection of the three prototype floating wind turbines as well as the handling of the components in the harbor before the turbines are brought out to sea.

As well as experience and knowledge, the company provides a LR 11350 crawler crane with 150 m PowerBoom, a CC 2400-1 crawler crane, a 130t auxiliary crane, and a 48-axle SPMT as well as load-spreading solutions.

**WITH
POWER
BOOM**

POWERBOOM EXTENSION LIEBHERR LR 11350

Schmidbauer now adds the PowerBoom to its fleet.

- ▶ The PowerBoom provides more flexibility to manage the heaviest lifts with the new generation of off- and onshore wind turbines.
- ▶ The simple mechanical add-on system increases the load capacity of the crawler crane by more than 50 percent.



► EXPANSION OF THE SÜDOSTLINK REGENSBURG AND KELHEIM HARBORS

► Equipment:
Liebherr LR 1300.15X

In order to connect the north of Germany where much green energy is produced with the rest of the country, many hundreds of kilometers of cable are needed. Over the next four years, Schmidbauer will move around 300 cable drums weighing up to 80 tons each at the harbors of Regensburg and Kelheim.

The crawler crane used is designed for lifting operations up to a maximum load of 300 tons. Its special hydraulically liftable cabin is ideally designed to carry out transshipments. In addition, it has a high-speed gear to cover the distances on the storage area at a greater speed.

► MEGA LIFT AND TRANSPORT BAYERNOIL REFINERY

Schmidbauer masters mega lift and sets pioneering record in Germany with spectacular road transport, Kelheim harbor to Bayernoil, Neustadt on the Danube.

A short planning phase, record breaking heavyweights, a tight schedule, precision required at every level: 336 tires and up to 880 tons total weight – never has a greater weight been transported by road in Germany.



► Equipment:
2 x 44-axle Scheuerle SPMTs
Demag CC 8800-1
Demag CC 2800-1

EMPOWERING SOLUTIONS

Since 1932, Schmidbauer has made a name for itself as an innovative and reliable heavy-load expert and is regarded as a pioneer in the field of moving extremely heavy loads. This success is based on long-standing expertise and on the company ethos to continuously improve its equipment and services.

In view of ever more complex tasks, the selection of the right partner is a decisive factor for your project. We help you in all stages of the planning while considering out-of-the-box possibilities, finding efficient solutions, developing the engineering with your experts, and providing project support along the entire value chain.

Schmidbauer is your competent partner from the start of the developing phase in all areas across many industries – from mechanical and plant engineering to the construction, energy and chemical industries.

Promoting our vision and practices that relate to corporate sustainability and responsibility, Schmidbauer is actively involved in contributing to the energy transition since the beginning, over a decade ago.

Looking back on 90 years of experience in the heavy haulage industry, we are pleased to support and facilitate overarching global energy strategies.



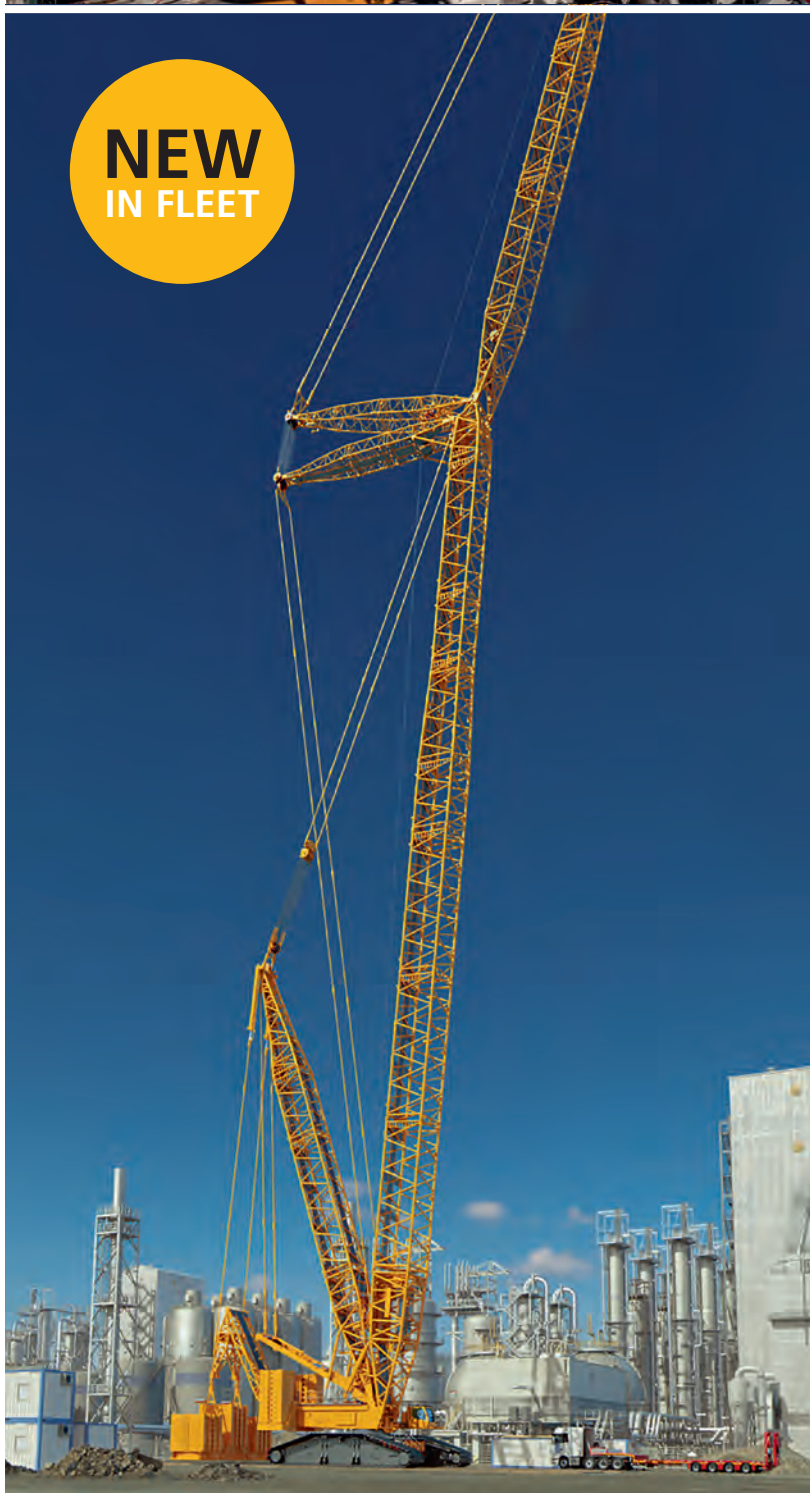


INCREASED HEIGHT LIEBHERR LR 1800-1.0

**Ready for 170 meters onshore wind turbines:
Outstanding lifting capacities and increased height
while designed for low cost worldwide transport.**

- ▶ Powerful industrial crane for jobs with a luffing jib and derrick system for plant construction and the petrochemical industry.
- ▶ With a number of benefits for the erection of wind turbines and wind farm maintenance work.
- ▶ Standard quick connection raising superstructure to simplify transport with only 3-meter car-body width.

**NEW
IN FLEET**



CONSTANTLY DIFFERENT, TANGIBLY MORE ABOUT SCHMIDBAUER

The Schmidbauer Group at a glance:

- ▶ Headquarters in Gräfelfing near Munich, Germany
- ▶ Founded in 1932
- ▶ Approx. 600 employees at almost 30 locations
- ▶ Subsidiaries: Fricke-Schmidbauer Schwerlast GmbH in Brunswick, Hamburg, Hanover and Aschersleben; Rieger & Moser GmbH & Co. KG in Ulm, Germany
- ▶ Europe-wide network of branch offices with Schmidbauer OÜ in Estonia and sales offices in Finland and France

Our service portfolio:

- ▶ Development and engineering
- ▶ Crane and transport service from a single source
- ▶ Multimodal logistics concepts
- ▶ In-house engineering
- ▶ Basic assembly, e.g. in the petrochemical sector

Heavy lifting equipment:

- ▶ Telescopic mobile cranes up to 700 tons
- ▶ Crawler cranes from 100 tons up to 1,350 tons
- ▶ SPMT axles with PPUs
- ▶ Loadspreading bongossi mats / HEB-beams
- ▶ Spreader beams up to 1,000 tons lifting capacity

▶ LIFTING IN PERPETUAL ICE ACTIVITIES IN THE ANTARCTIC

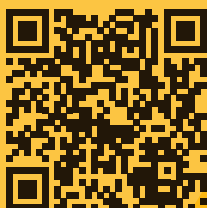
- ▶ Equipment:
Liebherr LTM 1040-2.1

Since March 2018, a Schmidbauer mobile crane has been operating for the DLR German research station in GARS O'Higgins, Antarctica. The transport of the crane from Germany to the polar region is deemed to be a logistical masterpiece for the system provider of crane technology and special transport solutions.

Schmidbauer knows that success can only be achieved in combination with technical know-how, logistics, and flexible yet precise planning – all in cooperation with a great team and in exchange with local and international market participants.

Schmidbauer GmbH & Co. KG

Munich headquarters
Seeholzenstrasse 1
82166 Gräfelfing/Germany
T +49 89 898676-0
F +49 89 851124
info@schmidbauer-gruppe.de



www.schmidbauer-gruppe.de
www.schmidbauer-group.com



#jointheteam



Schmidbauer